

Santa's Setbacks

Infant Score

by

Dave Corbett

Published by

Musicline Publications

P.O. Box 15632

Tamworth

Staffordshire

B78 2DP

01827 281 431

www.musiclinedirect.com

Licences are **always required** when published musicals are performed.

Licences for musicals are only available from the publishers of those musicals.

There is no other source.

All our Performing, Copying & Video Licences are valid for
one year from the date of issue.

**If you are recycling a previously performed musical,
NEW LICENCES MUST BE PURCHASED
to comply with Copyright law required by mandatory
contractual obligations to the composer.**

Prices of Licences and Order Form can be found on our website:
www.musiclinedirect.com

Santa's Setbacks

CONTENTS

		Page
Track 1	We Love Christmas	2
Track 2	Working	4
Track 3	Poor Old Rudolph	6
Track 4	A Nice Cup Of Tea	9
Track 5	Blow Blizzard, Blow	11
Track 6	Snowmen Quite Like It	13
Track 7	Sing Merrily	15

Track 1. We Love Christmas

Brightly

$\text{♩} = 100$

Words & Music by
Dave Corbett

D Em/D A D Em/D A D G D

All We love Christ-mas,

4 D Em/D A D Em/D A D G D

yes we do. *[bells]* yes we do. *[bells]* We love Christ-mas,

Last time to Coda

7 D G A⁷ D ⓪ *Repeat first time only*

fun for me and you.

9 G D/F# A/C# D D/A A D G D/F# A/C# D

1. Lot's of pre - sents, Christ - mas time is here, lot's of pre - sents,
 2. Trees with lights on, Christ - mas time is here, trees with lights on,
 3. Snow and car - ols, Christ - mas time is here, snow and car - ols,

12 D/A A7 D Em/D A D Em/D A D.S

Christ - mas time is here.
 Christ - mas time is here.
 Christ - mas time is here.

Coda



15 D Em/D A D Em/D A D

You.

Track 2. Working

An Action Song

Words & Music by
Dave Corbett

Cue: (Santa) Just mend the seat as fast as you can.

$\text{♩} = 104$

E \flat B \flat m E \flat B \flat m E \flat B \flat m E \flat B \flat m

The piano introduction consists of two measures in 4/4 time. The right hand features a rhythmic pattern of eighth notes with a quarter rest, while the left hand plays a steady eighth-note accompaniment. The key signature is B-flat major (two flats).

3 E \flat A \flat G \flat B \flat 7

All We are men - ding San - ta's sleigh, work - ing, work - ing,

The vocal line begins with a repeat sign and a fermata over the first measure. The piano accompaniment follows the vocal line, with the right hand playing chords and the left hand providing a rhythmic accompaniment. The key signature remains B-flat major.

Last time to Coda

5 E \flat A \flat E \flat B \flat 7 Coda E \flat

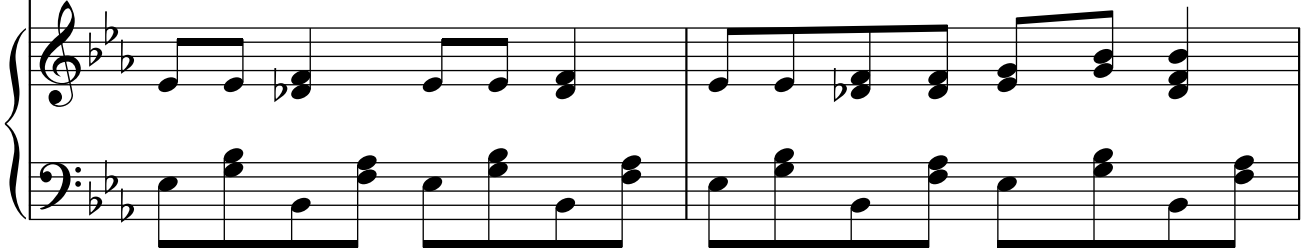
We are men - ding San - ta's sleigh, wor - king ve - ry hard.

The vocal line continues with a repeat sign and a fermata over the first measure. The piano accompaniment follows, with the right hand playing chords and the left hand providing a rhythmic accompaniment. The key signature remains B-flat major.

8 Eb Bbm Eb Bbm Eb Bbm Eb Bbm



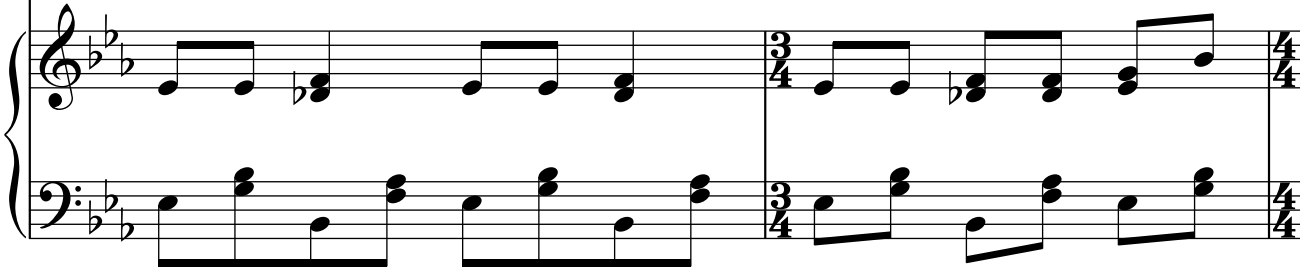
Get the tape, get the tape, get the tape, and mea - sure it..
Get the saw, get the saw, get the saw and cut the wood..
Get the nail, get the nail, get the nail and ham - mer it..
Get the paint, get the paint, get the paint and slap it on..



10 Eb Bbm Eb Bbm Eb Bbm Eb

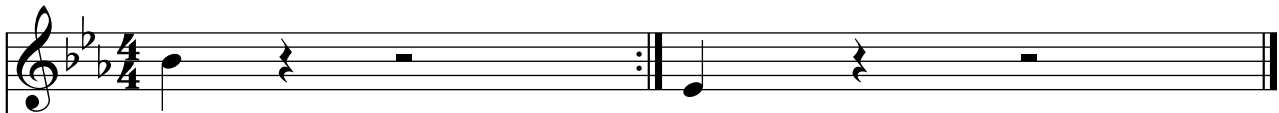


Get the tape, get the tape, get the tape, and mea - sure
Get the saw, get the saw, get the saw and cut the
Get the nail, get the nail, get the nail and ham - mer
Get the paint, get the paint, get the paint and slap it



⊕ Coda

12 Bbm Eb



it.. wood.. it.. on..
hard.



Track 3. Poor Old Rudolph

Cue: (Nurse) Rudolph must get some rest now.

Words & Music by
Dave Corbett

Brightly with humour

♩ = 100

C Eb Dm G C Eb Dm G

The piano introduction consists of two systems of four measures each. The first system has a repeat sign at the end. The melody is in the right hand, and the bass line is in the left hand. The key signature has one flat (Bb) and the time signature is 2/4.

All

5 C G C G C

The vocal line starts at measure 5. It consists of three phrases, each with a quarter rest at the end. The notes are: G4, A4, Bb4, C5, Bb4, A4, G4.

He has got a cold, He has got a cold, He has got a
 He is not too well, He is not too well, He is not too
 He could have the flu, He could have the flu, He could have the

The piano accompaniment for the first system consists of two systems of four measures each. The melody is in the right hand, and the bass line is in the left hand. The key signature has one flat (Bb) and the time signature is 2/4.

10 Dm Em/B Dm/F G Em/B Dm/F G

The vocal line starts at measure 10. It consists of three phrases, each with a quarter rest at the end. The notes are: G4, A4, Bb4, C5, Bb4, A4, G4.

cold, with a snee - zy nose, snee - zy nose,
 well, with a snee - zy nose, snee - zy nose,
 flu, with a snee - zy nose, snee - zy nose,

The piano accompaniment for the second system consists of two systems of four measures each. The melody is in the right hand, and the bass line is in the left hand. The key signature has one flat (Bb) and the time signature is 2/4.

15 G F(add2)/A B \flat $^{\circ}$ G/B C A

Oh no! It starts to ti - ckle, there's a twitch

19 D B 7 E C \sharp 7

some-thing hap - pens in his snitch: lose con - trol, try to squeeze,

23 F \sharp G F(add2)/A G/B G C 7 B \flat (add2)/D C 7 /E

he can't rea - lly help but sneeze! A - CHOO!