

# **Olivia! Senior**

Conductor's Score

Act 1

by  
Malcolm Sircom

Published by

**Musicline Publications**  
**P.O. Box 15632**  
**Tamworth**  
**Staffordshire**  
**B77 5BY**  
**01827 281 431**

**[www.musiclinedirect.com](http://www.musiclinedirect.com)**

No part of this publication may be transmitted, stored in a retrieval system, or reproduced in any form or by any means, electronic, mechanical, photocopying, manuscript, typesetting, recording or otherwise, without the prior permission of the copyright owners.

It is an infringement of the copyright to give any public performance or reading of this show either in its entirety or in the form of excerpts, whether the audience is charged an admission or not, without the prior consent of the copyright owners.

**Dramatical musical works do not fall under the licence of the Performing Right Society.**

Permission to perform this show from the publisher 'MUSICLINE PUBLICATIONS' is **always required**. An application form, for permission to perform, is supplied at the back of the script for this purpose. **To perform this show without permission is strictly prohibited.** It is a direct contravention of copyright legislation and deprives the writers of their livelihood.

Anyone intending to perform this show should, in their own interests, make application to the publisher for consent, prior to starting rehearsals.

**All Rights Strictly Reserved.**

## Olivia Conductor Score – Act 1 Contents

Notes for Olivia - Conductor Score .....	Page 1
(not on CD)            Overture .....	Page 3
Track 1                    Orphans .....	Page 35
Track 2                    Slop! .....	Page 46
Track 3                    Orphans (Reprise).....	Page 60
Track 4                    Happiness Somewhere .....	Page 65
Track 5                    London .....	Page 77
Track 6                    I Want To Be A Lady.....	Page 92
Track 7                    Good Times.....	Page 117
Track 8                    Suddenly .....	Page 153
Track 9                    Let's Go To The Opera .....	Page 171

See separate Act 2 Score for Tracks 10 to 23.



## Notes For Olivia – Conductor Score

This is a transposing score, available in A4, Concert (9"x12"), and A3.

This show is sold with the following parts:

Flute 1 (with optional Piccolo)

Flute 2

Oboe

Clarinet 1 (in B $\flat$ )

Clarinet 2 (in B $\flat$ )

Clarinet 3 (in B $\flat$ )

Alto Saxophone (in E $\flat$ )

Bassoon

French Horn (in F)

Trumpet (in B $\flat$ )

Trombone (Bass clef, standard) which is identical to Trombone (Treble Clef, B $\flat$ )

Drum Set

Violin 1

Violin 2

Double Bass

In an ideal world, you will have all 15 players and conduct with two hands (or a baton). In the likely event that this isn't possible, there's a piano part printed within this score that can be used to boost your orchestra, or fill in missing parts. It is entirely optional. We intentionally do not supply a "Piano only" part, as in our experience pianists are much happier from a "Piano Vocal" score. We hope you'll purchase one of these to teach your pupils the songs.

In the Piano Score there are two instructional sections, not printed in this score: The Rain In Spain (rhythm for speeches) and My Old Man (said "follow the van, and don't dilly dally on the way.").

Cue lines are provided at the start of each song, in both the score and parts. If these change, please warn your players before opening night.

Cue fragments are printed in the parts any time a player is counting rests for more than eight bars.

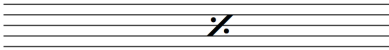
Chord symbols are provided in this score, above the "Piano" staves,

"Optional repeat" (vamp) sections are provided to help avoid awkward moments getting your cast on and off stage. If at all possible, rehearse these timings before opening night and give your band members exact repeat instructions. In case things go awry on the night,

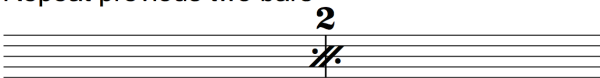
it's worth devising a hand gesture to indicate "repeat" and another to indicate "move on". Agree these with your band members before the first performance.

In order to save space, you may see repeat bar notations. These are shown below with explanations, in order to avoid doubt in any rehearsal or performance. This same diagram and accompanying text is shown in the notes on page 1 of each part.

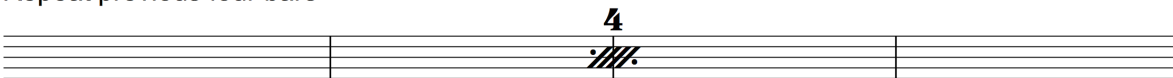
Repeat previous bar



Repeat previous two bars



Repeat previous four bars



**Enjoy the show!**

If you find any errors in this score or the corresponding parts please let us know. Just email [sarah@musicline-ltd.com](mailto:sarah@musicline-ltd.com) and we'll investigate. Thank you!

\* This is optional, and does not appear on Musicline Vocal or Backing Tracks.

# Overture\*

(Instrumental)

Malcolm Sircom  
arr. Leo Nicholson

Vivace ♩ = 138

Flute 1 *mp poco a poco cresc.*

Flute 2 *mp poco a poco cresc.*

Oboe *mp poco a poco cresc.*

Clarinet 1 *mp poco a poco cresc.*

Clarinet 2 *mp poco a poco cresc.*

Clarinet 3 *mp poco a poco cresc.*

Alto Sax. *mp poco a poco cresc.*

Bassoon *mp poco a poco cresc.*

French Horn *mp poco a poco cresc.*

Trumpet *mp poco a poco cresc.*

Trombone *mp poco a poco cresc.*

Drums *mp poco a poco cresc.*  
C D/C Eb/C F/C

Piano *mp poco a poco cresc.*

Violin 1 *mp poco a poco cresc.*

Violin 2 *mp poco a poco cresc.*

Double Bass *mp poco a poco cresc.*

5

Fl. 1

Fl. 2

Ob.

Cl. 1

Cl. 2

Cl. 3

Alto Sax.

Bsn.

Hn.

Tpt.

Tbn.

Dr.

Pno.

Vln. 1

Vln. 2

Db.

*fff*

*f*

G/C

A/C

B $\flat$ /C

C





13

Fl. 1

Fl. 2

Ob.

Cl. 1

Cl. 2

Cl. 3

Alto Sax.

Bsn.

Hn.

Tpt.

Tbn.

Dr.

Pno.

Vln. 1

Vln. 2

Db.

F B $\flat$  F/A Dm $^7$  G $^{11}$  C $^{11}$  F

17

Fl. 1 *mf*

Fl. 2 *mf*

Ob.

Cl. 1 *mf*

Cl. 2 *mf*

Cl. 3 *mf*

Alto Sax. *mf*

Bsn. *mf*

Hn. *mf*

Tpt. *mf*

Tbn. *mf*

Dr. *mf*

Pno. *mf*

Vln. 1 *mf*

Vln. 2 *mf*

Db. *mf*

Am<sup>7</sup> D<sup>7</sup> G Am<sup>7</sup> D<sup>7</sup> G

21

Fl. 1 *f*

Fl. 2 *f*

Ob. *f*

Cl. 1 *f*

Cl. 2 *f*

Cl. 3

Alto Sax. *f* *ff*

Bsn. *f*

Hn. *f* *ff*

Tpt. *f* *ff*

Tbn. *f* *ff*

Dr. *f* *ff*

Pno. *f* *ff* *f*

Vln. 1 *f* *ff* *f*

Vln. 2 *f* *ff* *f*

Db. *f* *ff* *f*

Bm7 E7 A G7/D Bbm6/Db C7



29 **molto rit.**

Fl. 1 *ff*

Fl. 2 *ff*

Ob. *ff*

Cl. 1 *mf*

Cl. 2 *mf* *ff*

Cl. 3 *mf* *ff*

Alto Sax. *mf*

Bsn. *mf*

Hn.

Tpt.

Tbn. *mf*

Dr. *mf* *ff*

Pno. *mf* *ff*

Vln. 1 *mf* *ff*

Vln. 2 *mf* *ff* (rests)

Db. *mf* *ff*

Chords: Gm7 C11 C7 F C7/E Cm6/Eb D7 Gm7 F/A Bb G9/B C11

33 **Andante espressivo** ♩ = 80

Fl. 1 *p*

Fl. 2 *p*

Ob. *p*

Cl. 1 *mf*

Cl. 2 *mp* *p*

Cl. 3 *mp* *p*

Alto Sax. *p*

Bsn. *p*

Hn. *mp* *p*

Tpt.

Tbn. *p*

Dr. *p* *f*

Pno. *p* *f*

Vln. 1 *p* con sord.

Vln. 2 *p* con sord.

Db. *p*

F(sus4) F Bb/C C7 F(sus4) F G7 C7 F/A Dm

38

Fl. 1

Fl. 2

Ob.

Cl. 1

Cl. 2

Cl. 3

Alto Sax.

Bsn.

Hn.

Tpt.

Tbn.

Dr.

Pno.

Vln. 1

Vln. 2

Db.

Cm7 F9 Bb Eb9 A+7 A7 Dm G7(b5)/C# Gm7(b5) C7



43

Fl. 1

Fl. 2

Ob.

Cl. 1

Cl. 2

Cl. 3

Alto Sax.

Bsn.

Hn.

Tpt.

Tbn.

Dr.

Pno.

Vln. 1

Vln. 2

Db.

*p*

*senza sord.*

*senza sord.*

F(SUS4) F G7 C7 Am7 F/A Dm7 Bm7(b5) E7

47

Fl. 1

Fl. 2

Ob.

Cl. 1

Cl. 2

Cl. 3

Alto Sax.

Bsn.

Hn.

Tpt.

Tbn.

Dr.

Pno.

Vln. 1

Vln. 2

Db.

Am7 D7 Gm7 C7 F/A Fm6 Gm7 C9







62

Fl. 1

Fl. 2

Ob.

Cl. 1

Cl. 2

Cl. 3

Alto Sax.

Bsn.

Hn.

Tpt.

Tbn.

Dr.

Pno.

Vln. 1

Vln. 2

Db.

*f*

BUSK for 4 BARS

*f*

B $\flat$

B $\flat$ /D

C $\sharp$ o

F/C

4







74

Fl. 1 *mf*

Fl. 2 *mf*

Ob. *mf*

Cl. 1

Cl. 2

Cl. 3

Alto Sax. *mf*

Bsn.

Hn.

Tpt.

Tbn.

Dr.

Pno. *Gm7* *C7* *F7*

Vln. 1

Vln. 2

Db.

78

Fl. 1

Fl. 2

Ob.

Cl. 1

Cl. 2

Cl. 3

Alto Sax.

Bsn.

Hn.

Tpt.

Tbn.

Dr.

Pno.

Vln. 1

Vln. 2

Db.

BUSK for 5 BARS

4

B $\flat$ /D

D7(#5)

D7

E $\flat$ 6

E $^{\circ}$



86 **C**

Fl. 1 *mf*

Fl. 2 *mf*

Ob.

Cl. 1 *mf*

Cl. 2 *mf*

Cl. 3 *mf*

Alto Sax.

Bsn.

Hn. *mf*

Tpt. *mf*

Tbn. *mf*

Dr. *mf* C

Pno. *mf* C F

Vln. 1

Vln. 2

Db. *mf*



94

Fl. 1 *mf*

Fl. 2 *mf*

Ob.

Cl. 1 *mf*

Cl. 2 *mf*

Cl. 3 *mf*

Alto Sax.

Bsn.

Hn. *mf*

Tpt. *mf*

Tbn. *mf*

Dr. *mf*

Pno. *mf*

Vln. 1

Vln. 2

Db. *mf*



102

Fl. 1 *mf*

Fl. 2 *mf*

Ob. *mf*

Cl. 1 *mf*

Cl. 2 *mf*

Cl. 3 *mf*

Alto Sax.

Bsn. *mf*

Hn. *mf*

Tpt.

Tbn.

Dr. *mf* x-rim x-rim cymbal

Pno. *mf* Gm7 C7 F

Vln. 1 *mf*

Vln. 2 *mf*

Db. *mf*









118

Fl. 1 *ff*

Fl. 2 *ff*

Ob. *ff*

Cl. 1 *ff*

Cl. 2

Cl. 3

Alto Sax. *ff*

Bsn. *ff*

Hn. *ff*

Tpt. *ff*

Tbn. *ff*

Dr. *ff*

Pno. *ff* A1 D G7

Vln. 1 *ff*

Vln. 2 *ff*

Db. *ff*

This page of the musical score, page 33, covers measures 123 through 126. The score is for a full orchestra and includes parts for Flutes 1 and 2, Oboe, Clarinets 1, 2, and 3, Alto Saxophone, Bassoon, Horns, Trumpets, Trombones, Drums, Piano, Violins 1 and 2, and Double Bass. The music begins at measure 123 with a *fff* dynamic. Flutes 1 and 2 play a melodic line with slurs. Oboe, Clarinets 1, 2, and 3, and Bassoon also have melodic parts, with Clarinet 2 and 3 starting at *ff*. Alto Saxophone and Horns enter in measure 124 with a *fff* dynamic. Trumpets and Trombones have melodic lines, with Trombone featuring a *gliss* (glissando) in measure 124. Drums play a rhythmic pattern with accents. Piano accompaniment includes chords G<sup>9</sup>, C, C/B<sup>b</sup>, F<sup>7</sup>/A, and A<sup>b</sup>7, with a *fff* dynamic. Violins 1 and 2 play a melodic line with slurs. Double Bass has a melodic line. The score concludes at measure 126 with a *p* (piano) dynamic.