

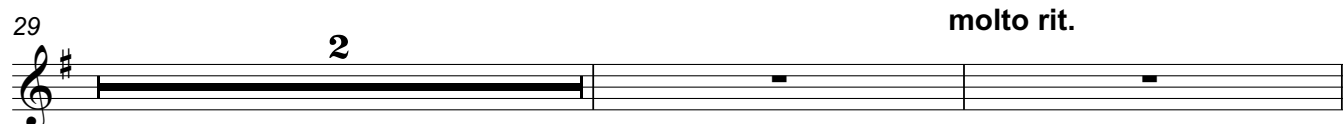
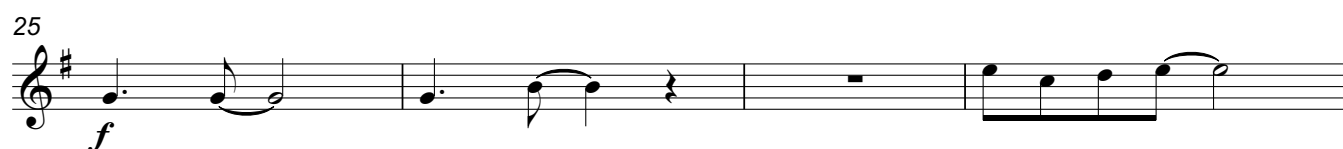
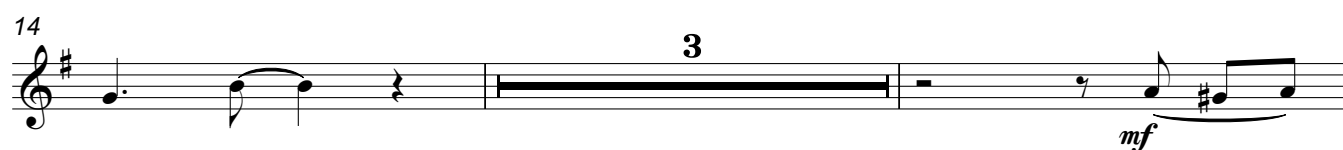
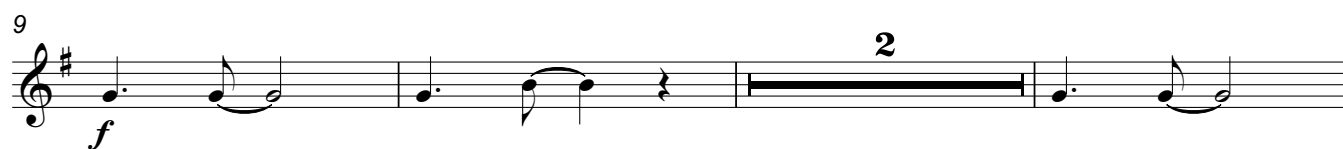
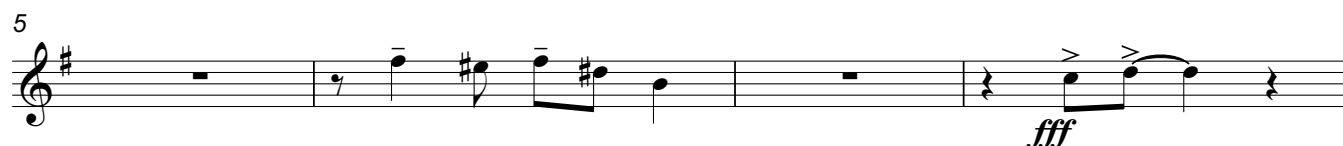
\* This is optional, and does not appear on Musicline Vocal or Backing Tracks.

# Overture\*

(Instrumental)

Malcolm Sircom  
arr. Leo Nicholson

Vivace ♩ = 138



**A**

33 **Andante espressivo** ♩ = 80

13

46 Ob.

Cl. 1

**B**

50 **Steady March Tempo** ♩ = 126

Tbn.

54

58

63

69

74



# Track 1

# Orphans

Cue - House lights dim.

Malcolm Sircom

Moderato, with a plodding marching beat ♩ = 120  
Straight mute

5

9 **A** 8 Orphans Group 1

20 **B**

24

28 **C** 7

36 (Mute off)