

CONTENTS – FULL SCORE

Notes for Pirates of the Curry Bean – Full Score			Page 1
Track 1	Overture	<i>(Instrumental)</i>	Page 3
Track 2	Pot of Gold	<i>(Company)</i>	Page 9
Track 3	Pot of Gold Play Off	<i>(Instrumental)</i>	Page 20
Track 4	SFX Nose Blow		Page 22
Track 5	Pirate Play On	<i>(Instrumental)</i>	Page 22
Track 6	Pirate Play Off	<i>(Instrumental)</i>	Page 22
Track 7	Lumbago Lullaby	<i>(Pearl)</i>	Page 23
Track 8	Midnight Raid	<i>(Instrumental)</i>	Page 26
Track 9	SFX Explosion		Page 27
Track 10	Old London Docks	<i>(Instrumental)</i>	Page 28
Track 11	Cod Play On	<i>(Instrumental)</i>	Page 30
Track 12	Crew Play On #1	<i>(Instrumental)</i>	Page 31
Track 13	SFX Splash		Page 31
Track 14	Crew Play Off	<i>(Instrumental)</i>	Page 32
Track 15	Scuttle & Slack Play On	<i>(Instrumental)</i>	Page 33
Track 16	Rat Music #1	<i>(Instrumental)</i>	Page 34
Track 17	Anchors Away	<i>(Cod & Company)</i>	Page 37
Track 18	The Curry Bean	<i>(Instrumental)</i>	Page 45
Track 19	Beneath The Same Starry Sky	<i>(Jack, Liza & Pearl)</i>	Page 47
Track 20	The Crunchy Frog	<i>(Instrumental)</i>	Page 54
Track 21	Rat Music #2	<i>(Instrumental)</i>	Page 56
Track 22	Rat Music #3	<i>(Instrumental)</i>	Page 59
Track 23	Hornhonker Play Off	<i>(Instrumental)</i>	Page 62

Track 24	Crew Play On #2	<i>(Instrumental)</i>	Page 63
Track 25	Rhumba	<i>(Instrumental)</i>	Page 64
Track 26	Mop Dance	<i>(Instrumental)</i>	Page 65
Track 27	Deadeye	<i>(Instrumental)</i>	Page 71
Track 28	The Fight	<i>(Instrumental)</i>	Page 74
Track 29	SFX Twang		Page 77
Track 30	Piratical Style	<i>(Redbeard & Company)</i>	Page 77
Track 31	Sea Trek	<i>(Instrumental)</i>	Page 86
Track 32	SFX Popping Plug		Page 88
Track 33	Storm	<i>(Instrumental)</i>	Page 89
Track 34	SFX Monkey Chase #1		Page 91
Track 35	SFX Monkey Chase #2		Page 91
Track 36	SFX Monkey Chase #3		Page 91
Track 37	SFX Spade		Page 91
Track 38	SFX Digging		Page 91
Track 39	SFX Monkey Chase #4		Page 91
Track 40	Natives Play On	<i>(Instrumental)</i>	Page 92
Track 41	Lumbago	<i>(Company)</i>	Page 92
Track 42	Wonga Play On	<i>(Instrumental)</i>	Page 106
Track 43	SFX Bonk		Page 106
Track 44	Redbeard Play On	<i>(Instrumental)</i>	Page 106
Track 45	SFX Shave		Page 106
Track 46	Piratical Style (Reprise)	<i>(Company)</i>	Page 107
Track 47	Company Play Off	<i>(Instrumental)</i>	Page 114

Notes For Pirates of the Curry Bean – Full Score

This show is sold with the following parts:

C + 8ve Lead
C Lead
B \flat Lead
E \flat Lead
Keyboard 1
Keyboard 2
Electric Guitar
Bass Guitar
Drum Set

The “Lead” parts play the melody line throughout the show and are designed to accommodate as wide a range of melody instruments as possible. For example, if you have a flautist use the “C + 8ve part”; if you have a violinist use the “C” part; if you have a trumpeter, clarinetist or soprano saxophone player use the “B \flat ” part and if you have an alto saxophone player use the “E \flat ” part. There is no need to purchase all four “Lead” parts unless you have an especially large band. As these four parts are almost identical and follow the melody line, only the “C Lead” part is reproduced (at concert pitch) in this score.

The assumption is that you will conduct the show from a keyboard, playing “Keyboard 1”. In order to prevent squinting, the corresponding staves are a little larger than those of the other instrumental parts. The “Keyboard 1” part is suitable for acoustic or digital piano; a 76 key keyboard will suffice. It is designed to be played solely on a “piano” sound. If you wish to delegate the keyboard playing to a colleague or student, a separate “Keyboard 1” part is available.

This orchestration is designed to be as flexible as possible. The smallest instrumentation recommended is Piano with Bass and Drums. In this instance, use the piano part printed in the Performance Score rather than this Full Score. If you can add a “Lead” instrument to the Piano, Bass and Drums, do use the “Keyboard 1” part printed here. The “Keyboard 2” and “Electric Guitar” parts add colour and are optional.

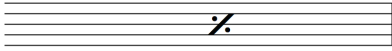
Chord symbols are provided in this score, above the “Keyboard 1” staves, and in the “Electric Guitar” and “Bass Guitar” parts. In the “Electric Guitar” part, the chord text is sometimes different to that shown elsewhere, as it tells your guitarist *what* to play as opposed to what he/she should expect to hear elsewhere in the band! For example, a chord notated in the score as E \flat /F (E \flat Major over an F bass) may be notated simply as E \flat (E \flat Major) in the “Electric Guitar” part.

“Repeat as necessary” (vamp) sections are provided to help avoid awkward moments getting your cast on and off stage between scenes. If at all possible, rehearse these timings before opening night and give your band members exact repeat instructions. In case things

go awry on the night, it's worth devising a hand gesture to indicate "repeat" and another to indicate "move on". Agree these with your band members before the first performance.

In order to save space, you may see repeat bar notations. These are shown below with explanations, in order to avoid doubt in any rehearsal or performance. This same diagram and accompanying text is shown in the notes on page 1 of each part.

Repeat previous bar



Repeat previous two bars



Repeat previous four bars



Enjoy the show!

If you find any errors in this score or the corresponding parts please let us know. Just email sarah@musicline-ltd.com and we'll investigate. Thank you!

Track 1

Overture

(Instrumental)

Cue - House lights dim.

Craig Hawes
Arr. by Leo Nicholson & James Morris

♩ = 72 Grandioso

Lead

Keys 1

Keys 2

Electric Guitar

Bass Guitar

Drum Set

p *f* *p* *f* *p* *f*

D/A Bb/A Am⁷

1a Sus Strings + Timp Trem

Clean

A Double speed (bouncy) ♩ = 144

Lead

K1

K2

E. Gtr.

Bass

Dr.

mf *mf* *mf* *mf* *mf* *mf* *mf* *mf*

D D⁺ Bm/D D⁺ D D⁺ B B⁷/D[#]

1b Pizz Strings

8

Lead

Em A7 F#m7 Bm7 Bm7/E E7 A

K1

K2

E. Gtr.

Bass

Dr.



12

Lead

D D+ Bm/D D+ D D+ B B/D#

K1

K2

E. Gtr.

Bass

Dr.

16

Lead

Em A7 F#m7 Bm Em7

K1

K2

E. Gtr.

Bass

Dr.



19

rit.

Lead

A7 D Dm F/G

K1

K2

E. Gtr.

Bass

Dr.

1c Sus Strings

B ♩ = 104 Understated romantic

22

Lead

C Em7 Am C/G F C/E Dm7 Dm/G

K1

K2

E. Gr.

Bass

Dr.

26

Lead

C Em7 Am Am/G F#7 D7 F/G G Gb/Ab Ab

K1

K2

E. Gr.

Bass

Dr.

4

C Bouncy

31

Lead

Db Ab Db7 Gb Ebm7 E° Db/F A7 Ab7

K1

K2

E. Gr.

Bass

Dr.



35

Lead

Db Ab/Eb Db7/F Gb Gb6 G° Db/Ab Ab7 Db

K1

K2

E. Gr.

Bass

Dr.

39

Lead

K1

K2

E. Gtr.

Bass

Dr.

Chords: Gb⁶ Fm⁷ Eb^{m7} Db F#m⁷ Emaj⁷ Db/Eb Ab⁷

43

Lead

K1

K2

E. Gtr.

Bass

Dr.

Chords: Db A Abm⁷ Db Cm

1d Sus Strings + Timp Trem

Cymbal Roll

ff

Track 2

Pot of Gold

(Company)

Cue - Deadeye: Well, that is, until now...

Craig Hawes

Arr. by Leo Nicholson & James Morris

♩ = 100

Musical score for the first section of 'Pot of Gold'. The score is in 4/4 time with a tempo of 100. It features six staves: Lead, Keys 1, Keys 2, Electric Guitar, Bass Guitar, and Drum Set. The key signature is three sharps (F#, C#, G#). The Lead staff begins with a rest followed by a melodic line. Keys 1 and 2 provide harmonic support with chords and bass lines. The Electric Guitar part includes a 'Rock Crunch' effect. The Bass Guitar and Drum Set parts provide a steady rhythmic foundation.

Musical score for the second section of 'Pot of Gold', marked 'A' and 'Faster' with a tempo of 152. The score is in 4/4 time and features six staves: Lead, K1, K2, E. Gtr., Bass, and Dr. The key signature remains three sharps. The Lead staff starts at measure 5 with a melodic line. K1 and K2 provide harmonic support with chords and bass lines. The E. Gtr. part features a melodic line with a '2b Rock Organ + Strings' effect. The Bass and Dr. parts provide a steady rhythmic foundation. The section ends with a double bar line and a '2' indicating a repeat.

9

Lead

K1

K2

E. Gr.

Bass

Dr.

E A/E C/D A/B

2



13

Lead

K1

K2

E. Gr.

Bass

Dr.

E A/E E A/E

2

17

Lead

E A/E C/D A/B

K1

K2

E. Gr.

Bass

Dr.



21

B

Lead

ALL

Voice

Tra-vel with us__ on a new__ ad - ven - ture, o - ver the o - cean blue.__

E G#m7 A(add9) B

K1

K2

E. Gr.

Bass

Dr.

25

Lead

Voice

Fol-low your heart, and your dreams_ will all_ come true._

K1

C#m7 G#m A A/B

K2

E. Gr.

Bass

Dr.

29

Lead

Voice

Wait - ing at_ the rain - bow's end,_ are trea - sures all_ un - told,_ so

K1

G#/B# C#m G#/B# C#m

K2

E. Gr.

Bass

Dr.

33

Lead

Voice

chase that rain - bow, find_ your pot_ of gold!

A E/G# F#m7 A/B C/D A/B

K1

K2

E. Gr.

Bass

Dr.

37

Lead

Voice

Sail-ing a - way, where the wind_ may take_ us, ne-ver know what_ you'll find._

E G#m7 A(add9) B

K1

K2

E. Gr.

Bass

Dr.

C